

# The Australian Women & Leadership Forums™ The Leadership Journey

**Armidale** 29th August, 2007

Armidale City Bowling Club

9.00am - 4.30pm

On August 29th, the women of Armidale are invited to a unique and powerful day at the Armidale City Bowling Club. The Australian Women & Leadership Forum presents *The Leadership Journey* - a dynamic day of self-reflection, sharing, and planning for future success and happiness.

Over the past 2 years the forums have inspired and guided many thousands of women in major regional and metropolitan cities throughout Australia. During 2006 alone, over 5000 women have attended this important event. In many regional centres, the Australian Women & Leadership forum has been embraced as a powerful tool to help support local business networks and the broader community.

The Workplace Training Advisory Australia is delighted to be bringing this important event to Armidale.

Importantly, the forums are generating fantastic results for participants. Regardless of whether or not we hold formal leadership positions, issues of leadership and empowerment are important to all women. The Australian Women & Leadership Forum acknowledges that as women, it is impossible to separate the different areas of our lives. Indeed, when we feel confident and empowered, we perform optimally at work, at home, and in our social lives.

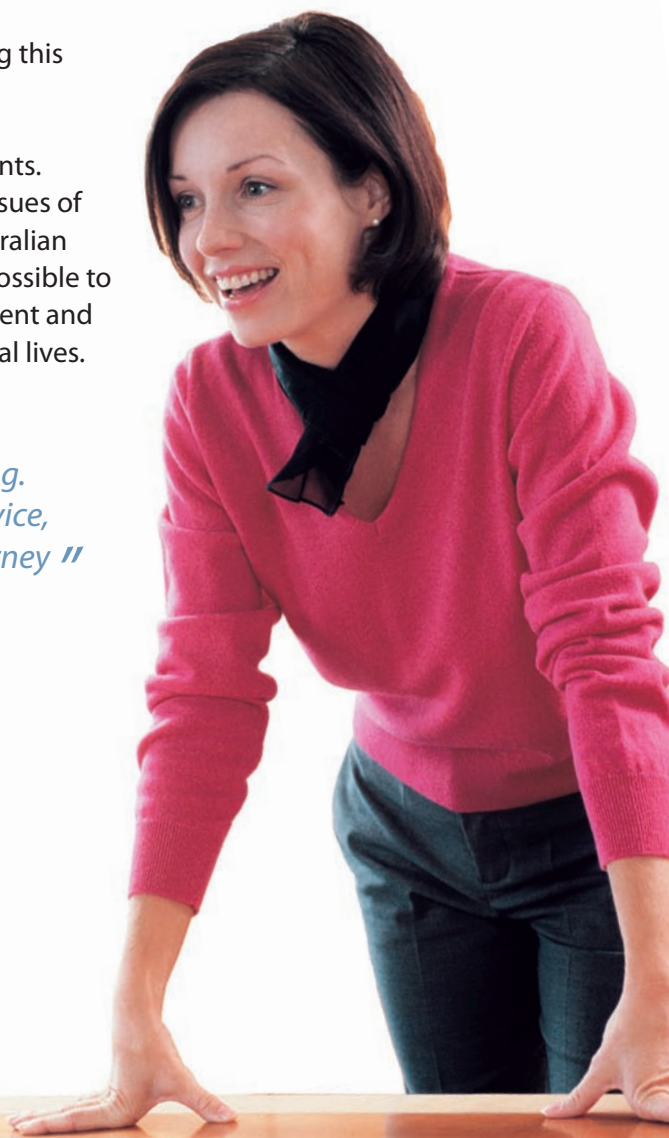
*“ Leaders are made, not born, and they never stop learning.  
Women & leadership forums are important sources of advice,  
inspiration and support of other women on the same journey ”*

*Pru Goward Former Sex Discrimination Commissioner*

Proudly supporting the  
National Breast Cancer Foundation

**pink ribbon**  
for breast cancer research

**wtaa**  
Workplace Training  
Advisory Australia



## Forum Overview

**The Leadership Journey** combines a powerful blend of self-reflection, sharing, and exposure to practical tools and strategies to deliver an invaluable day of personal growth and development. Some of the key themes include leadership styles, work/life balance, networking, and leadership goal-setting. Some of these themes are outlined below.

### Balance

**The Leadership Journey** acknowledges that as women, it is impossible to separate the different areas of our lives. Optimal performance is impossible without a general sense of stability in the major areas of our lives. Indeed, when we feel confident and empowered, we scale greater heights at work, at home, and in our social lives.

### Connecting

The day also looks at the power of networking, and in particular, unlocking the powerful networks that exist around all of us. Historically, men have been encouraged to exploit their networks for business and career purposes far more than women. The forum looks at how we as women can better leverage our networks for business and life success. One of the hallmarks of the Australian Women & Leadership Forum is the powerful contacts that many women make on the day.

### Leadership Styles

An underlying theme throughout the forum is the importance of understanding leadership from the perspectives of both self and others. Through greater understanding, we can embrace our innate leadership styles for greater success and contentment in our working lives and beyond the office.

Historically, characteristics typically considered 'masculine' rather than 'feminine' have been considered as traits necessary for strong leadership. More recently however, there has been increasing awareness among leadership experts that the more feminine qualities of collaboration, inclusiveness, and nurturing are key traits among effective leaders. This realisation is reflected in the push by leading organisations to cultivate and leverage these leadership characteristics.

Far from suggesting a complete shift to a softer style of leadership, the Australian Women & Leadership Forum suggests that these innate qualities should be part of a balanced, all-round approach to leadership. Doubtless, there are still times when overtly 'tough' leadership is appropriate. After all, we girls can all be as tough as nails when we need to be!

*“ I have never been to any forum or PD event in which everyone was so attentive and enthused throughout the day ”*

*Michele Millane - ECG*



## About the Australian Women & Leadership Forum

The Australian Women & Leadership Forum is an important national initiative designed to support the increased presence of women in leadership roles across all sectors. The project comprises a range of professional development programs, corporate advisory services, networking opportunities, and ongoing research.

Not surprisingly, the Australian Women & Leadership Forum has been embraced by Australian organisations as a critical platform to explore issues, trends, and opportunities around gender equity.

For more information, please visit [www.womensforum.com.au](http://www.womensforum.com.au)

## About the Workplace Training Advisory Australia

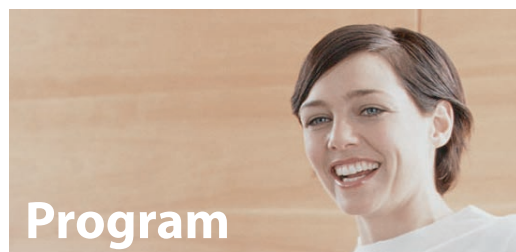
Over the past two years, the WTAA has been delighted to support the Australian Women & Leadership Forum. The WTAA is a leading provider of professional development advice and services to the public and private sectors.

WTAA's involvement in the Australian Women & Leadership Forum is underpinned by an outstanding network of high-calibre female consultants (over 90% of WTAA's consultants are female).

For more information about WTAA, please visit [www.wtaa.com.au](http://www.wtaa.com.au) or call 1300 138 037.

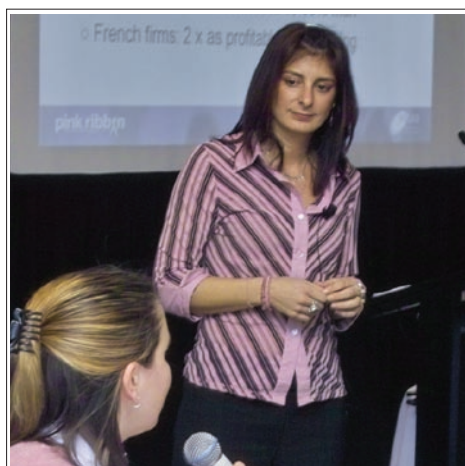
*“ It was great to have inspirational women all in the room together. More power to us! ”*

*Tamara Iwasiw, AQIS*



### The Leadership Journey

- 8.30AM REGISTRATIONS  
Informal networking
- 9.00AM **SESSION ONE**  
Leadership experiences  
Women's qualities and trends  
Contemporary challenges for women leaders
- 10.30AM Morning tea
- 10.50AM **SESSION TWO**  
Exploration of challenges  
Consider strategies
- 12.30PM Lunch
- 1.30PM **SESSION THREE**  
Reflections on a leadership journey  
Strategies in Action
- 3.00PM Afternoon tea
- 3.20PM **SESSION FOUR**  
Strategies in Action  
Goal setting & wrap-up  
Call to Action
- 4.30PM **PRESENTATION OF DELEGATE GIFT BAG**  
**CLOSE**



# Registration Form

## The Australian Women & Leadership Forums™



### Armidale

29th August - Armidale City Bowling Club

Upon payment this document becomes a **Tax Invoice**

**Return via fax: 03 9270 9099**

Today's Date: \_\_\_\_\_

Organisation name: \_\_\_\_\_

Contact name: \_\_\_\_\_

Phone: \_\_\_\_\_

Fax: \_\_\_\_\_

Email: \_\_\_\_\_

Postal address: \_\_\_\_\_

**Further Information**  
 For further information please contact the Workplace Training Advisory of Australia.  
 Phone. 1300 138 037  
 Fax. 03 9270 9099  
 Email. info@wtaa.com.au  
 Post. PO Box 4079 Melbourne University VIC 3052  
 Proudly presented by  
 Workplace Training Advisory Australia Pty Ltd  
 ABN 18 501 109 543

Names of participants:	Title/Position	Email (required for confirmation details)
1. _____	_____	_____
2. _____	_____	_____
3. _____	_____	_____
4. _____	_____	_____
5. _____	_____	_____

Fees GST Incl.			
Individual rate \$350	Group rate \$295 Per Person (minimum 3 participants)	Total number of participants _____	Total registration fees due: \$ _____

**Payment Method**  
 Payment in full required on registration (Registration is not confirmed without payment)

Credit Card	VISA, Mastercard and Bankcard only	Amount \$
Card Number	_____	Signature
Expiry	_____	

EFT	
Account Name:	Workplace Training Advisory
Account Number:	1030-1805
BSB:	063-123

Cheque	
Make cheques out to:	Workplace Training Advisory Australia
Send to:	PO Box 4079 Melbourne University VIC 3052

**Registration Fees**  
 Registration fees include forum workbooks, presentations, delegates packs and all catering. Individual rate \$350 Group rate \$295 per person (minimum of three).

**Withdrawals**  
 If you need to withdraw from the forum, you are required to give at least 14 days notice prior to the day of the forum and a \$55 withdrawal fee will apply. For withdrawals with less than 14 days notice, no refunds will be issued. Transfers are accepted up to 7 working days before the forum. Transfer fee of \$55 will apply.